

This map shows the playgrounds, parks, nature areas, allotments and other green spaces that you can discover and enjoy.

All the outdoor spaces highlighted on the map are free entry and open to the public at all times, except for allotments. Most of the green spaces are wheelchair accessible, with many offering suitable paths too. When visiting, remember to respect the area. Please put any litter in bins and clean up after your dog.

We've marked out some possible walking routes on the map, or you can join in with the Walking For Health group. Find out more at southglos.gov.uk/walking-for-health

Discover Kingswood



1 LODGE HILL

Home to the lodge of King John, this hill used to be within the King's Woodland and offered a good vantage point for the royal hunting party to look out across the surrounding forest which spread over an area of 18 square miles.

2 LEES HILL PLAYING FIELD

An ideal jogging circuit, the 500m track around the outside of this large open space is an easy route for first time runners. There is a playground, tennis and basketball courts too. The central space is used by a local football group.

3 BARRINGTON GREEN PLAY AREA & BALL COURT

This tucked-away green space is a local haven of calm, with carved bench seating and lush planting and trees. Have a sitkabout or try out the outdoor gym, slide, roundabout and basket swing.

4 FELICITY PARK

Surrounding a small pond, this wildlife corridor is an important nature reserve and a peaceful escape from the city. The grassland and wildflower meadow are home to pollinating insects, including bees and butterflies. Relax on the pond-side bench and see if you can spot moor hens, coots, water voles or the occasional visiting heron.

5 SOUTHEY PARK

An important community park for its local residents, there is a playground and skatepark, plus a number of benches to sit and enjoy the view from. Bristol Rovers Supporters Juniors Football Club is also based here. The wide, open, green space is perfect for a stroll or jog around. The active group Friends of Southey Park have been instrumental in installing paths and organising events throughout the year. New members are always welcome.

6 GROW FOREVER COMMUNITY ORCHARD

Everyone is welcome and no gardening experience necessary. Sessions take place weekly (Tuesday-Thursday) from 10am-3pm with an experienced gardener to facilitate and provide support.

The storage container is decorated by local illustrator and graffiti artist Andy Council and has been transformed into a community cinema.

7 SISTON COMMON

Criss-crossed by brideways, foot and cycle paths you are sure to encounter a mixture of people and animals in this ancient farmland space. Once used by local farmers for the grazing of cattle, goats, horses, ducks and chickens, Siston Common is now accessible to all.

8 WARMLEY FOREST PARK

An area of new woodland, scrub and open grassland, with lots of paths to explore and wildlife to spot. There are also ponds and the Siston Brook rushes along the woodland's eastern boundary. Some of the pathways are suitable for wheelchairs.

The orienteering trail, installed by Wildways Project, has five courses of differing challenge levels and accompanying downloadable maps and information. See if you can find the 'waymarker' engraved steel plaques, along the route, which illustrate a plant or animal found at the Forest Park. Why not take a rubbing of the plaques, while you're there?

The park was once the site of clay pits and a pipe works next to a railway line and a coal mine. If you look among the bushes you may find fragments of glazed ceramic pipe of the sort once used for drains.

9 KINGSWOOD PARK

Kingswood Park offers children's play areas, a bowling green with pavilion and tennis courts. There's plenty of places to sit back and escape the hustle and bustle of the high street. Catch the occasional performance on the central band-stand at one of the park's special events. Admire the large wooden sculpture near the park's main entrance. See if you can spot the sign-post tribute to Professor Colin Pillinger, who is best known as the principal investigator and driving force behind the British Beagle 2 Mars Lander Project.

Join in with the Friends of Kingswood Park, who look after events, fundraising and planning the park's future and are instrumental in keeping the park in great condition.

10 GRIMSBURY FARM

The farm has a variety of animals, a duck pond, nature walks, a playground, picnic area and a café; perfect for a day out or just an hour if you're passing. Open every day (9am-6pm) throughout the year, the farm is enjoyed by families and couples, old and young alike. Admission and parking is free. Visit: fogf.co.uk

For children and young adults with disabilities and SEN, there's the nearby Hop Skip & Jump Bristol, who provide high quality respite care. There are two fully-equipped sensory rooms, a games room and a music room, plus an extensive outside space, with a sports court, adventure play equipment and a selection of castles and forts! Visit: hopskipandjump.org.uk/bristol

11 MAGPIE BOTTOM

Magpie Bottom, so called because of the abundance of magpies that roost there throughout the year, runs along the Stradbrook. There are several woodland trails, and many hidden and overgrown paths, in addition to the main pathways going north to south and east to west. A large green has goal posts at the centre and smaller grassy areas are dotted around the site.

12 WOODSTOCK PLAY AREA

Tucked away and surrounded by trees, this sprawling park contains a play area for younger children. There's a balance beam, slides and swings.

13 WESTON WAY PLAYING FIELDS

A large open space, perfect for those wanting a kick about (there are goal posts) and ideal for dog walkers.

14 COCK ROAD RIDGE

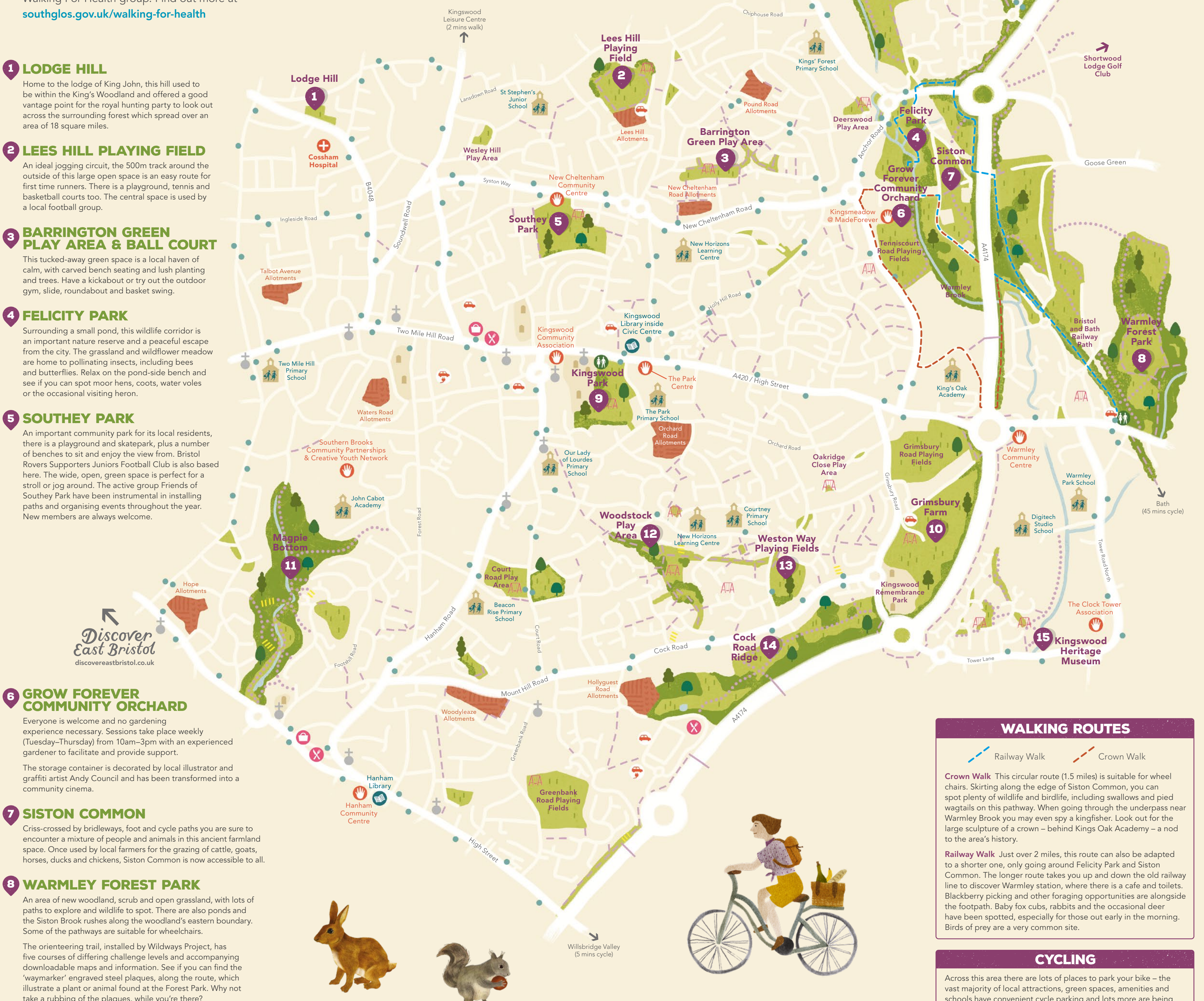
Lush and green, the south-east facing slope of the Ridge is a hidden oasis of pleasant walks, with a diverse range of wildlife and unrivalled views over Bristol and towards Bath. Have a wander among the grassland and scrub, and discover the woodland and two ponds, which are home to a variety of birds, butterflies and the occasional badger and fox.

Cock Road may have got its name from the old practice of trapping wild birds - such as woodcock - along the forest's narrow pathways. The Great Oak by the pond is possibly one of the original trees.

There is a wheel chair and footpath access point at the north-east end plus a footpath access point leading from Wraxall Road.

15 KINGSWOOD HERITAGE MUSEUM

This museum holds a variety of fascinating displays that give an insight into local industry and social history of the area. Housed inside the 18th Century brass mill at Warmley there's an icehouse and windmill tower to explore, plus gardens nearby with grottoes, an echo pond and a huge statue of Neptune. Visit: kingswoodmuseum.org.uk



WALKING ROUTES

Railway Walk Crown Walk

Crown Walk This circular route (1.5 miles) is suitable for wheelchairs. Skirting along the edge of Siston Common, you can spot plenty of wildlife and birdlife, including swallows and pied wagtails on this pathway. When going through the underpass near Warmley Brook you may even spy a kingfisher. Look out for the large sculpture of a crown - behind Kings Oak Academy - a nod to the area's history.

Railway Walk Just over 2 miles, this route can also be adapted to a shorter one, only going around Felicity Park and Siston Common. The longer route takes you up and down the old railway line to discover Warmley station, where there is a cafe and toilets. Blackberry picking and other foraging opportunities are alongside the footpath. Baby fox cubs, rabbits and the occasional deer have been spotted, especially for those out early in the morning. Birds of prey are a very common site.

CYCLING

Across this area there are lots of places to park your bike - the vast majority of local attractions, green spaces, amenities and schools have convenient cycle parking and lots more are being added all the time.

For those new to cycling or with additional needs visit Warmley Wheelers (located next to the cafe at the old Warmley station). warmleywheelers

KEY

Places of Interest	Car parks
Grassland	Electric vehicle charging point + car parks
Woodland	Shopping / retail
Paved routes (off-road)	Restaurants / eating / drinking
Unpaved routes (off-road)	Community Centres
Bus stops	Libraries
Schools	Toilets
	Playgrounds

100m 500m 800m



Every effort has been made to represent an accurate reflection of the area on this map. We apologise for anything we may have missed out. Information correct at time of printing December 2018.