



What date was the park founded?

What date were the wooden sculptures made?

Dates are covered into the sculptures

Fill in the missing letters on the crest of Kingswood Park's entrance gate.

Work out how old the park is

CAN YOU FIND THESE LEAVES?



Have you found these leaves in the park? Can you label them using the names below?

oak lime rose

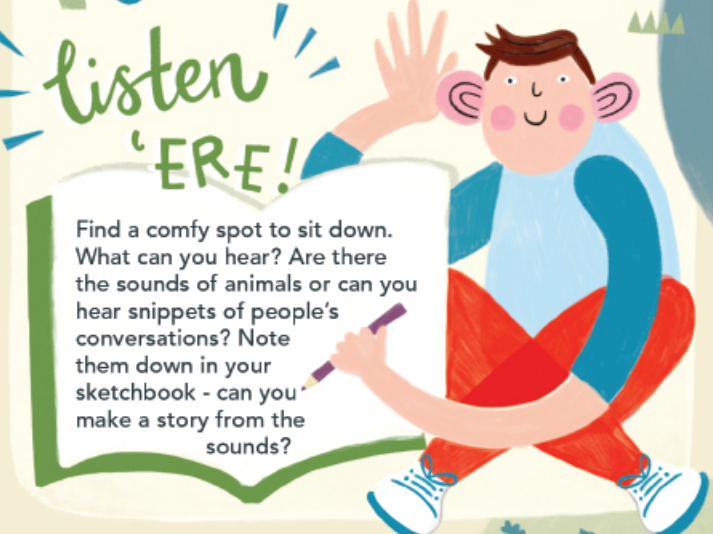
If you don't have a set of **boules**, you can improvise using anything - shoes / pebbles / conkers! Set a target and see who can throw closest to it.

play **BOULES**



Have a go in the SKATE PARK

Bring a skateboard or scooter!



listen 'ERE!

Find a comfy spot to sit down. What can you hear? Are there the sounds of animals or can you hear snippets of people's conversations? Note them down in your sketchbook - can you make a story from the sounds?

LEES HILL PLAYING FIELD

There's also a basketball & tennis court.

Take a Kite to the Park

play **frisbee**

Take a frisbee with you to the park. Try throwing it in different ways - overarm, underarm, with your left or right hand.

You could also set up 2 goals and play ultimate frisbee - you can't run with the frisbee or hold on to it for too long!

Have a go on the 100 metre race track. What's your best time? What about when you hop, skip, or jog backwards? How about a 3 legged race or a wheelbarrow race with a friend?

GET ON TRACK

GRIMSBURY FARM

Find out the animals' names... or make them up!

what can you spot?

Go for an explore of the farm - what animals can you find? Check them off the list below - can you fill in the missing letters? Ask a member of staff if you're stuck.

- ☐ Gloucestershire \_ L \_
- ☐ \_ O \_ Pig
- ☐ P \_ G \_ Y Goat
- ☐ G \_ \_ & E
- ☐ M \_ SC \_ VY Duck



TAKE SOME snaps!



Bring a camera or sketchbook with you and get creative.

get ARTY

Sketch or photograph something:

- ☐ fluffy ☐ shiny
- ☐ blue ☐ tiny ☐ huge
- ☐ from a weird angle
- ☐ really zoomed-in

SISTON Common

National Cycle Route 4 to Bath runs through Siston Common.

BATH

get your HEAD in the CLOUDS

Lie down on the grass. If it's a cloudy day, test your creativity and imagination to see whether you can see any pictures in the clouds.



Why did the bike fall over? ...because it was 2 TYRED!

can you GRASS whistle?



By placing a blade of grass between your palms and blowing between your thumbs, see if you can make a loud whistle!

Have you been on the Bristol & Bath Railway path? There's a sculpture trail to see and sometimes there are old steam engines running at Bitton Station.

WARMLEY Forest Park



Can you hear different birdsong? Make a note of the birds you can hear - if the sounds were written down as words, how would they be spelt? Tweeetattoo? Brrrleep!

Be a TEXTURE collector

Using a page from your sketchbook and a crayon, collect the rubbings of tree trunks, leaves and some letters. Just rest your paper on the texture and scribble your crayon over it.



WOODSTOCK Play Area



Try going down the slide on your back & tummy. Which is faster?

make LEAF CREATURES

Collect different leaves and see if you can make creatures, or even weird monsters from them. You could take some leaves home to play with, by sticking them down to paper and drawing around them.

Using anything, like leaves, twigs or rocks, make a natural artwork installation. You could make a leafy picture or mandala on the ground.



Give the tyre swings a go! How high can you reach?

COCK ROAD RIDGE

Be mindful

Find a peaceful spot to lie or sit down - close your eyes. Take 5 deep breaths and try to focus on your body. After a few minutes, note the sounds you heard, the smells or anything you felt - like the wind or a tingling. Did any thoughts pop into your mind - what were they?

PLAY 40:40

Pick a base - like a tree. One person is 'it' and counts while the others hide. The aim for the hiders is to get back to base without being seen. If you're spotted, 'it' has to run back to base & shout that they've seen you and you're out. You can save yourself though if you beat them back to base!

You could also play Hide & Seek or Sardines.

